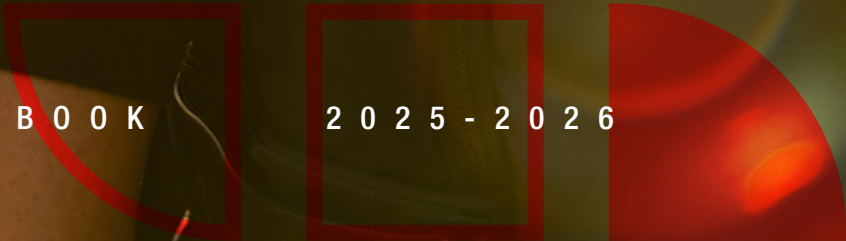



Your path.  
Your way.



VIEW BOOK

2025 - 2026





**HELLO  
AANII [AWE-NEE]  
HÀU [HOW]  
OKI [OH-KEE]  
TAANSHI [TAWN-SHI]  
TÂN'SI [TAHN-SEH]**

*Medicine Hat College acknowledges and honours the traditional territories of the First Nation People of Treaty 7 and Treaty 4, and of the Métis people who share a deep history with this land. We recognize and honour the land, history, ways of being, and our relationship with First Nation, Métis, and Inuit people as we forge together towards a relationship of reconciliation, respect, understanding, and healing.*



# Content

## 2 START HERE

explore, apply, register

## 4 MEET YOUR MATCH

match your interests to our programs

## 6 LOVE TO LEARN

experience hands-on learning in the classroom and community

## 9 CONNECT WITH SUPPORTS

learn about academic, financial and wellness services

## 11 FIND YOUR PLACE

connect with campus life

## 12 CULTURAL CONNECTIONS

engage with Indigenous teaching, learning, and supports

## 15 LIVE HERE

find your home away from home

## 18 EXPERIENCE ADVENTURE

see the world with education abroad opportunities

## 20 WORK HARD, PLAY HARD

join Rattlers Athletics

## 22 EXPLORE PATHWAYS

review admission requirements for all college programs

## 36 APPLY TO MHC





# start here



Can't wait to see our campus?  
Scan the QR code to take a virtual tour.



# YOUR QUICK GUIDE: GETTING STARTED AT MHC

Not sure where to begin? Explore interests and programs at [www.mhc.ab.ca/careercoach](http://www.mhc.ab.ca/careercoach).

## 1 VISIT

### Campus Tours & Student for a Day

Get a feel for campus! Book a tour at any time or register as a Student for a Day throughout the year by calling **403.529.3819**.

### Medicine Hat Campus Open House

November 13, 2024

### Brooks Campus Open House

November 6, 2024

## 2 APPLY

Apply to the program of your choice at [applyalberta.ca](http://applyalberta.ca) or visit us at an Open House!

Application processing begins **October 1, 2024** for the 2025/2026 academic year.

Don't forget to apply for residence if you plan to live on campus.

## 3 ACCEPT

Check your email! A letter of acceptance will be emailed to you if your application is successful. Once you receive the letter of acceptance, you must confirm your seat by paying the deposit.

Visit [www.mhc.ab.ca/apply](http://www.mhc.ab.ca/apply) for details.

## 4 FUND

Student loan applications open mid-June. Apply early to avoid delays. To apply, please visit [www.studentaid.alberta.ca](http://www.studentaid.alberta.ca).

Scholarship and bursary applications are accepted from **March 1 - June 1, 2025**. Apply for scholarships and bursaries at [www.mhc.ab.ca/awards](http://www.mhc.ab.ca/awards).

Questions? Contact our Financial Aid office: [finaidinfo@mhc.ab.ca](mailto:finaidinfo@mhc.ab.ca).

## 5 REGISTER

It's important to register early to ensure you get the classes you need, when you need them. Class registration opens **May 1, 2025** for the 2025/2026 academic year.

Questions? Contact our Registration office: [registration@mhc.ab.ca](mailto:registration@mhc.ab.ca).

## 6 START

Be sure to attend the following events for a smooth transition into college life!

### New Student Orientation

**FALL: September 2, 2025**

**WINTER: January 5, 2026**

Dive into your college experience and learn what to expect during your time at MHC.

### DATES AT A GLANCE

#### OCTOBER 2024

Applications Open

#### NOVEMBER 2024

Open House

#### MARCH 2025

Scholarship Applications Open

#### MAY 2025

Class Registrations Open

#### JUNE 2025

Student Loan Applications Open  
Winter Intake Applications Open

#### SEPTEMBER 2025

New Student Orientation

#### JANUARY 2026

Winter New Student Orientation

# Meet your match

## DISCOVER YOUR PASSION

*Whether you are attending high school or thinking about a career change, you can benefit from connecting your personality, interests and values to educational opportunities.*

*The following is based on Holland's Theory of Career Choice which uses six personality types to measure an individual's characteristics and match them with careers. The theory assumes that when your natural characteristics are the same as your work environment needs, your satisfaction at work is greater.*

*Select 1-3 types that describe you best and match the colour of those types to the corresponding MHC programs. Remember, career planning is not a one-time activity, but a series of decisions made over your lifetime.*

**The Doers - Realistic** people are interested in spending time outdoors, using tools to solve problems, and working on projects with concrete results. Realistic people tend to use common sense to solve problems and appreciate work environments that are organized and structured where they can fix, build, or repair things. Realistic people value tradition, practicality, and common sense.

**The Thinkers - Investigative** people are interested in solving problems through thinking using science, mathematics, writing, and research. Investigative people enjoy learning new facts and theories, researching, analyzing, and interpreting information. Investigative people value independence, curiosity, and learning.

**The Creators - Artistic** people are interested in self-expression, communication, culture, and unstructured creative activities. Artistic people enjoy using their imagination while observing and participating in a variety of artistic pursuits including visual, performing, and culinary arts as well as writing. Artistic people value beauty, originality, and independence.

**The Helpers - Social** people are interested in people, teamwork, helping, and community service. Motivated by helping and empowering others, Social people enjoy explaining, guiding, and using their insights to solve problems in collaborative and supportive environments. Social people value communication, cooperation, generosity, and service to others.

**The Persuaders - Enterprising** people are interested in leadership, business, and politics. Motivated by persuading and selling, Enterprising people enjoy managing projects and working with others and leading people towards goals and economic success. Enterprising people value competition, influence, status, and risk taking.

**The Organizers - Conventional** people are interested in organization, order, detail, and accuracy. Practical and precise, Conventional people prefer working in structured and predictable environments. Conventional people use information to solve problems efficiently. Conventional people value accuracy, stability, and efficiency.

---

Looking for more career resources? Visit [www.mhc.ab.ca/careercoach](http://www.mhc.ab.ca/careercoach).







# student voice

**KYLE VALK**  
University Transfer: Arts

"If you have a thirst for knowledge and want to pursue different things, you can find an interest in anything. Give it your best shot, you'll never know where you'll end up."

Dominant Characteristic  
 Secondary Characteristic

## PROGRAMS

- Administrative Office Management** DIPLOMA
- Administrative Office Professional** CERTIFICATE
- Advanced Accounting** POST-DIPLOMA CERTIFICATE
- Art and Design** BACHELOR OF APPLIED ARTS
- Arts** UNIVERSITY TRANSFER
- Automotive Service Technician** APPRENTICESHIP
- Aviation Management** CERTIFICATE
- Built Environment Engineering Technology (BEET)** DIPLOMA
- Business Administration** DIPLOMA
- Carpenter** APPRENTICESHIP
- Child and Youth Care Counsellor** DIPLOMA
- Commerce/Management** UNIVERSITY TRANSFER
- Computer Aided Drafting and Design (CADD)** CERTIFICATE
- Criminal Justice** DIPLOMA
- Data Analytics for Business** CERTIFICATE
- Early Learning and Child Care** CERTIFICATE AND DIPLOMA
- Education** BACHELOR OF/ UNIVERSITY TRANSFER
- Electrician** APPRENTICESHIP
- Environmental Biology & Reclamation Technology** DIPLOMA
- Health Care Aide** CERTIFICATE
- Heavy Equipment Technician** APPRENTICESHIP
- Humanities & Social Sciences** DIPLOMA
- Information Technology** CERTIFICATE/DIPLOMA
- Intermediate Accounting** POST-DIPLOMA CERTIFICATE
- Kinesiology** DIPLOMA AND UNIVERSITY TRANSFER
- Marketing & Design** POST-DIPLOMA CERTIFICATE
- Nursing** BACHELOR OF SCIENCE
- Occupational/Physical Therapist Assistant** DIPLOMA
- Paramedic** BACHELOR OF APPLIED HEALTH SCIENCE
- Plumber/Gasfitter** APPRENTICESHIP
- Power Engineering Technology** DIPLOMA
- Practical Nurse** DIPLOMA
- Pre-Professional Programs (dentist, dental hygiene, medicine, pharmacy, vet)** UNIVERSITY TRANSFER
- Science** UNIVERSITY TRANSFER
- Service Dog and Canine Studies Management** DIPLOMA
- Social Work** DIPLOMA/UNIVERSITY TRANSFER
- Speech Language Pathologist Assistant** DIPLOMA
- Sport & Event Marketing and Management** DIPLOMA
- Steamfitter/Pipefitter** APPRENTICESHIP
- Sustainable Energy Systems Professional** CERTIFICATE
- Sustainable Innovation** DIPLOMA
- Welder** APPRENTICESHIP

For more detailed information on Medicine Hat College programs, refer to page 22 or visit [www.mhc.ab.ca/programs](http://www.mhc.ab.ca/programs).

*Alumni  
voice*



**BENITA SAUER**

*University Transfer: Commerce*

*"The whole point of everything is getting to know who you are. When you know who YOU are, then you'll know what you love to do, then you'll love what you're doing, regardless of what it is."*

# Love to learn



## HANDS-ON. PERSONAL. CONNECTED.

Learning at MHC is all about providing rich experiences that support your chosen path. Whether that path starts and ends here or leads you down new roads, we have the certificate, diploma, degree, apprenticeship and university transfer programs that can get you where you want to go.

If a career in health care is your calling, our simulation labs will put you in the driver's seat of an ambulance or bedside as you deliver a baby. For those with a creative flair, collaborate with your classmates on an immersive art gallery experience. Passionate about the environment? Apply your classroom learning to local research opportunities. Have an interest in trades, technology or innovation? Engineering, computer programming and apprenticeship training are all here too. And if further education is in your future, build a solid foundation in university transfer programs that set you up for success when the time comes to move on from MHC.







## WORK INTEGRATED LEARNING

Work Integrated Learning (WIL) is all about taking lessons learned in the classroom and applying them to real world experiences. Through hands-on learning and opportunities to create relationships with employers and community partners, students are able to build valuable skills, knowledge and connections that support their success.

From practicums and clinical placements to internships and co-ops, WIL is available in many MHC programs. **Ask about WIL opportunities available in your program(s) of interest!**



OF EMPLOYED GRADUATES  
ARE IN THEIR FIELD OF STUDY

\*BASED ON 2023 GRADUATE SURVEY



OF GRADUATES WOULD  
RECOMMEND MHC

\*BASED ON 2023 GRADUATE SURVEY





**MHC STUDENTS RECEIVED  
ALMOST \$1 MILLION IN  
SCHOLARSHIPS, BURSARIES  
AND OTHER AWARDS IN  
2023/24**



# Connect with supports

## LEARNING & LIFE

We're here to help! Find the support you need to be successful in your program with everything from academic advising and coaching to accessibility services, tutoring, and so much more.

But it's not just about classrooms and coursework. We know that with college comes new experiences, new expectations, and new challenges. For the times when you need to talk things through, we're here with free counselling and mental health programs, spiritual services, and peer support to help you balance your life in and outside of school.

### DON'T WORRY, YOU'VE GOT THIS.

For a full list of supports and services, visit [www.mhc.ab.ca/studentlife](http://www.mhc.ab.ca/studentlife).

## FINANCIAL AID

Learn how you can fund your education! Our Student Financial Aid team can help you understand the student loan process and provide access to financial award opportunities.

MHC students received almost \$1 million in scholarships, bursaries, and other awards in 2023/24. Awards are based on different criteria including academic performance, financial need, extracurricular activities, volunteerism, and athletics, so there is plenty of opportunity for students to access additional funding.

Applying for awards is quick and easy! For more info, visit [www.mhc.ab.ca/awards](http://www.mhc.ab.ca/awards) or email [finaidinfo@mhc.ab.ca](mailto:finaidinfo@mhc.ab.ca). Award applications are accepted from **March 1 – June 1**.

## WELLNESS

State-of-the-art equipment and bright open spaces will move your workout to the next level in MHC's new Fitness Centre! Take advantage of **free** Fitness Centre access and group classes throughout the fall and winter semesters, plus enjoy beautiful outdoor spaces and trails year round.

Studying at Brooks Campus? Enjoy **free** access to the onsite gym and discounted rates at the JBS Canada Centre, just minutes away in downtown Brooks.

### APPROXIMATE 1ST YEAR COSTS



FOR MORE DETAILED INFORMATION ON PROGRAM TUITION AND FEES, VIEW OUR COST ESTIMATE CHARTS AT [WWW.MHC.AB.CA](http://WWW.MHC.AB.CA).











# Find your place

## CAMPUS COMMUNITY

MHC is a close knit community that offers a variety of ways to connect and engage. From student governance and clubs to the ambassador program, there are many opportunities to be involved and make the most of your college experience!

The **Students' Association of Medicine Hat College** (SAMHC) is your connection to campus life. SAMHC serves as a voice for all students and plans special events that celebrate diversity, create awareness, and engage the college community. Interested in joining or starting a student club? Have questions about academic processes, need to talk to a peer supporter, or require health and dental benefits? Maybe you just want to meet people and have fun. Whatever you're looking for, SAMHC is a good place to start! Visit [samhc.ca](http://samhc.ca) for details.

The **ambassador program** is a great way for you to share your passion for MHC and maximize your student experience! Volunteer for events, gain valuable skills, and make new friends as a student ambassador. Visit [www.mhc.ab.ca/ambassadors](http://www.mhc.ab.ca/ambassadors) for more info.



↓ NAMING CEREMONY



LEARN MORE ABOUT INDIGENOUS  
ENGAGEMENT & STUDENT  
SUPPORTS AT MHC.



## CULTURAL CONNECTIONS

Medicine Hat College is honoured to share the name Ómahksípiitaa, which means Big Eagle.

The name was gifted to MHC by Blackfoot Elders at the grand opening of Co-op Wellness Commons in 2022. At the heart of this facility is a unique gathering space – Ómahksípiitaa – which has become a hub for Indigenous teaching and learning for our college and community.

MHC's Indigenous Engagement & Student Supports office, located across from Ómahksípiitaa, provides a safe and supportive environment for Indigenous students and connects them to resources like financial aid and wellness. It also assists with the education and integration of Indigenous culture on campus by hosting guest speakers, workshops, crafting circles, and other special events that increase awareness and understanding of Indigenous issues, traditions, and history.





# Elder voice

**CHARLIE FOX**  
Elder-on-Campus

*"I have always felt it was my responsibility to share my culture. With reconciliation in mind, there is so much need for diversity and I hope in the coming years, this role will allow me to build lasting relationships, enhance the community and help bridge the gaps as we move forward in reconciliation."*



 **INDIGENOUS GRAD CEREMONY**



 **NATIONAL DAY FOR TRUTH AND RECONCILIATION**





**300**

STUDENTS LIVE IN RESIDENCE



**2 MIN  
WALK TO  
CLASS**

TAKE A WALK THROUGH  
RESIDENCE. SCAN THE CODES  
BELOW TO TAKE A VIRTUAL TOUR.



GOLFVIEW  
RESIDENCE

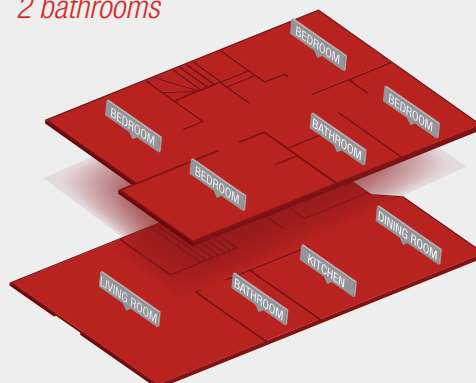


COULEEVIEW  
RESIDENCE

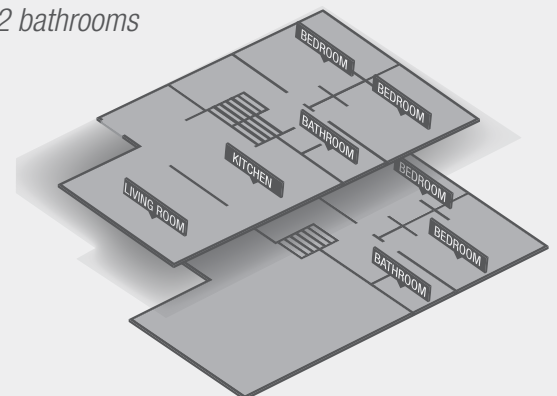
[WWW.MHC.AB.CA/VIRTUALTOUR](http://WWW.MHC.AB.CA/VIRTUALTOUR)



**GOLFVIEW**  
*4 bedrooms  
2 bathrooms*



**COULEEVIEW**  
*4 bedrooms  
2 bathrooms*







# Live here

## YOUR HOME AWAY FROM HOME

Live the ultimate college experience! Independence, convenience, and affordability are yours when living in residence at MHC. Find community and create friendships that will last a lifetime.

Accommodations are comfortable, four-bedroom, fully furnished townhouse units in two complexes—Golfview and Couleeview. Each bedroom is equipped with a bed, desk, and closet. Each unit is furnished with a WiFi router, washer and dryer, living room furniture, kitchen appliances, deep freezer, vacuum

cleaner, and storage space. Just bring bedding, kitchen utensils, dishes, and other personal effects and you're ready to move in!

We also have eight four-bedroom units at our Brooks Campus that offer the same amenities.

With a two minute walk to classes and rent as low as **\$685/month** including the Residence Life fee, utilities, and WiFi, living on campus just makes sense. Additional fees apply for parking.

Find out more at [www.mhc.ab.ca/studentlife](http://www.mhc.ab.ca/studentlife).

**?** **DID YOU KNOW**  
RESIDENCE ASSISTANTS LIVE ONSITE AND PROVIDE SUPPORT AND SECURITY FOR STUDENTS IN OUR RESIDENCE COMMUNITIES.

# A great place to call home



## MEDICINE HAT

*[tourismmedicinehat.com](http://tourismmedicinehat.com)*

Whether you already call Medicine Hat home or are ready to make a move, this warm and welcoming community in Southeast Alberta has everything you need and more. There are endless opportunities to be active and enjoy the great outdoors with the city's extensive trail system, golf courses, and green spaces. Medicine Hat also boasts a vibrant arts and entertainment scene featuring exceptional musical talent, sporting events, and high profile shows at the Esplanade Arts & Heritage Centre, Co-op Place, and other venues around the city.

With all the amenities of a larger centre plus the advantages of living in a smaller community, like short commutes and affordable accommodations, there's lots to love about The Hat!

Located less than 300 kilometres from Calgary and 50 kilometres from the Saskatchewan border, Medicine Hat is well-positioned along the Trans-Canada Highway with easy access to the Cypress Hills and the United States.

## BROOKS

*[brooksregion.ca](http://brooksregion.ca)*

Some of MHC's programming is offered at our Brooks Campus, located 100 kilometres west of Medicine Hat. Brooks is a vibrant, diverse community rich in culture and western hospitality with easy access to world-renowned attractions.



**MEDICINE HAT  
IS CANADA'S  
SUNNIEST CITY  
WITH 2,512  
HOURS OF  
SUNSHINE  
PER YEAR**



COURTESY OF MOOSE & SQUIRREL BISTRO



Namaste Sat shri akal  
 Kamusta Hola Wah gwaan  
 Konichi Hello Kia ora  
**BROOKS**  
 THE CITY OF 100 HELLOS



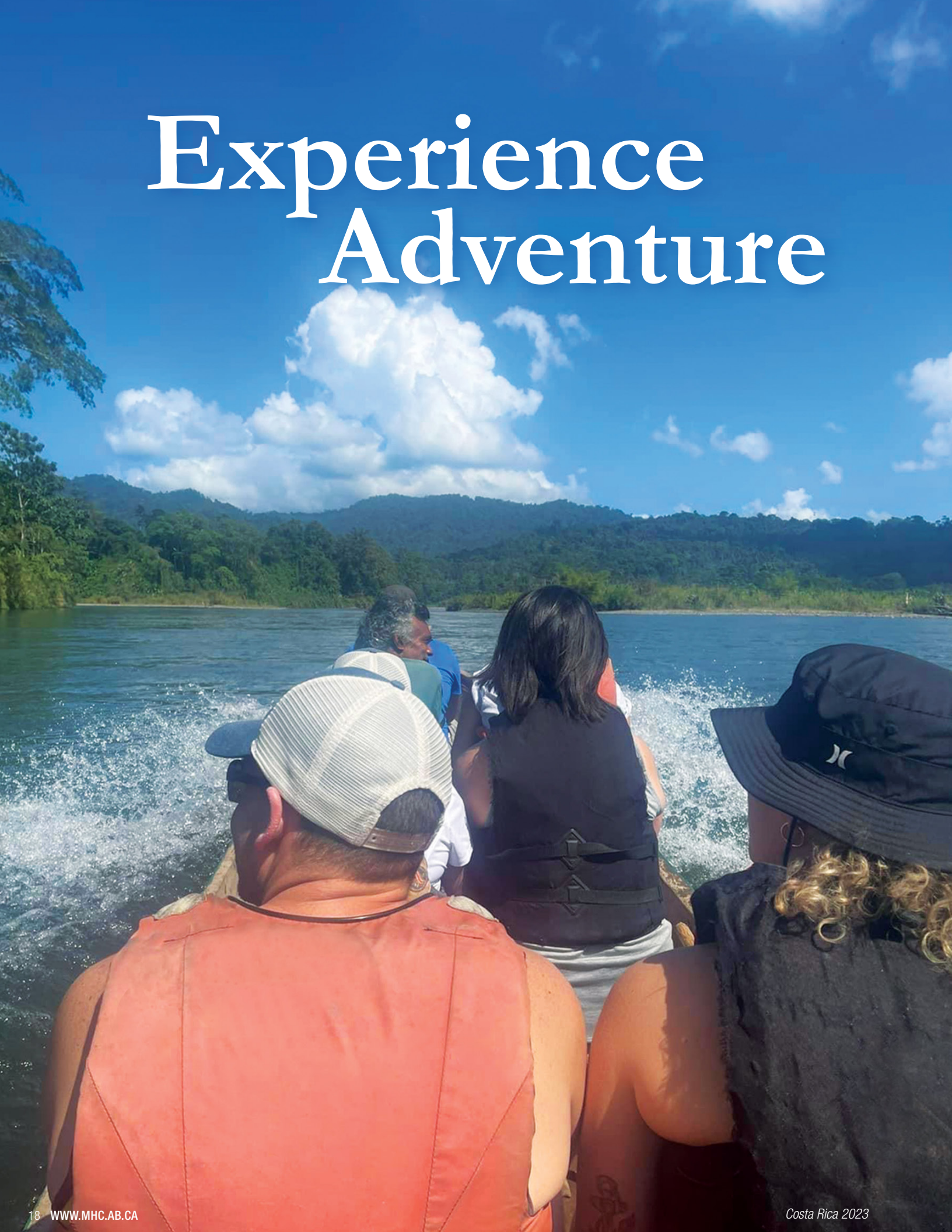
\*COURTESY OF TOURISM MEDICINE HAT



**DINOSAUR  
PROVINCIAL PARK**  
 UNESCO HERITAGE SITE



# Experience Adventure







*student voice*

**ASHLEY THAKURDEEN**

*Education Abroad: Costa Rica 2024*

*"I thoroughly enjoyed my experience and feel more confident to discuss topics regarding cultural awareness and capacity. Costa Rica is a beautiful country with a vast range of foods and biodiversity and I learned so much about their culture and ways of life. I highly encourage anyone to take on this experience and get out of your comfort zone as your life will be changed!"*

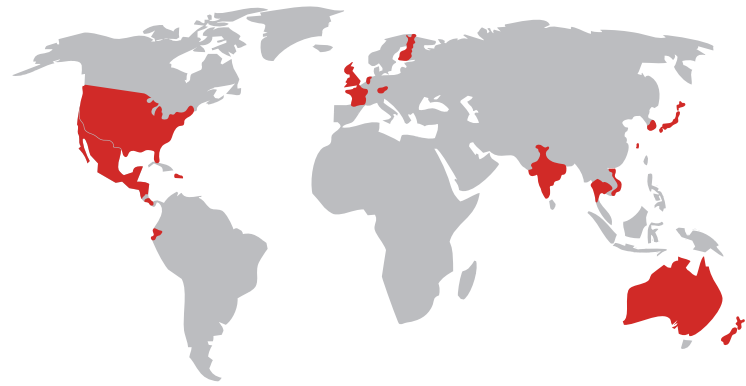


*student voice*

**INA FAIRBANKS**

*Education Abroad: South Korea 2024*

*"Going to another country as an international student is beyond the experience you would spend as a tourist. Learning the country's culture, language, history and architecture goes farther and deeper in value. Developing friends and connections that will last a lifetime. I hope to experience this more within my lifetime and encourage others to experience it as well."*



**MHC has partnerships with over 30 institutions in more than 15 countries around the world, including degree completion opportunities in the UK and Australia.**



## **SEE THE WORLD EDUCATION ABROAD**

MHC's international activity is guided by the philosophy that education and learning is greatly enhanced by an understanding of different cultures, languages, and peoples.

Education Abroad programs provide students with opportunities to develop the skills and attitudes required to function successfully in an interconnected global society, world, and economy. Choose from semester or summer exchange programs or participate in virtual exchange activities.



# Work hard, play hard



**BASKETBALL**  
(MEN'S AND WOMEN'S)



**CROSS-COUNTRY  
RUNNING**  
(MEN'S AND WOMEN'S)



**GOLF**  
(MEN'S AND WOMEN'S)



**SOCCER/FUTSAL**  
(MEN'S AND WOMEN'S)



**VOLLEYBALL**  
(MEN'S AND WOMEN'S)



**HOCKEY**  
(WOMEN'S)



## RATTLEERS ATHLETICS

Medicine Hat College has a proud tradition of athletics, leadership and community engagement. As Southeast Alberta's team, our Rattlers athletes bring their best in basketball, cross-country running, futsal, golf, soccer, volleyball, and women's hockey and demonstrate excellence in competition and in the classroom.

The Snake Pit is the place to be on game day so gather your friends, grab your noisemaker and get Rowdy! Admission to regular season home games is free for MHC students.





Want to be even closer to the action? If you think you've got what it takes to be a Rattler, connect with our athletics department to learn more about recruitment opportunities.



[RATTLERS.CA](http://RATTLERS.CA)

**ROWDY THE RATTLER**





# Explore Pathways



**Life's journey is rarely a straight or simple path.**

Hear from people whose unique pathways through education have led them to find their passion.

## ADMISSION CHARTS

*program admission requirements*

It's never too early to start planning for your future. Prepare for your MHC experience today by understanding the admission process and requirements for your chosen program.



## PROGRAMS OF STUDY

MHC has a variety of certificate, diploma, degree, university transfer, and trades programs to meet your needs.

### CERTIFICATE

*Program Length: 1 year*

Certificate programs allow students to train for a specific career in a very short period of time.

### DEGREE

*Program Length: 4 years*

Degree programs are offered on campus in partnership with other Alberta universities, allowing students to complete a full degree in Medicine Hat.

### DIPLOMA

*Program Length: 2 years*

Diploma programs prepare students for careers or further study.

### UNIVERSITY TRANSFER

*Program Length: 1-2 years*

University Transfer allow students to start their degree at MHC by building an individualized program that supports their transfer to a university.

### APPLIED DEGREE

*Program Length: 3 years*

Applied degrees combine academic education with practical, on-the-job training.

### APPRENTICESHIP

*Program Length: 3-4 years*

Apprenticeship is a combination of on-the-job and technical training that leads to certification as a journeyman.

## MORE WAYS TO LEARN

Flex

### FLEXIBLE LEARNING

Flexible learning is a delivery method that combines online and face-to-face learning for maximum flexibility. Students can choose to study online or in person, or take advantage of both methods to accommodate their individual schedules.

### EXTENDED LEARNING

Whether you're looking to advance your career, develop new skills, or learn about emerging industries and technologies, Extended Learning provides courses when, where, and how you need them.

For more information, scan the QR code or visit [www.mhc.ab.ca/extendedlearning](http://www.mhc.ab.ca/extendedlearning).



Explore your career options, visit [www.mhc.ab.ca/careercoach](http://www.mhc.ab.ca/careercoach).





# CERTIFICATES & DIPLOMAS

## 1-2 year programs

Unless otherwise stated, a minimum grade of 50% is required for all subjects.

PROGRAM	LENGTH	ALBERTA ADMISSION REQUIREMENTS	SASKATCHEWAN ADMISSION REQUIREMENTS	MATURE ADMISSION REQUIREMENTS (AGE 21 OR OLDER)	CAREER OPPORTUNITIES
<b>ADMINISTRATIVE OFFICE PROFESSIONAL CERTIFICATE</b> Also offered online	1 YEAR	<ul style="list-style-type: none"> <li>• ELA 30-1 or ELA 30-2</li> <li>• Math 10C</li> </ul>	<ul style="list-style-type: none"> <li>• ELA 30</li> <li>• Foundations of Math and Pre-Calculus 10</li> </ul>	<ul style="list-style-type: none"> <li>• ELA 30-1 or ELA 30-2</li> <li>• Math 10C</li> </ul>	Graduates of the Administrative Office Professional program are prepared for entry level positions in a variety of office environments including accounting, education, and agriculture.
<b>ADMINISTRATIVE OFFICE MANAGEMENT DIPLOMA</b>	2 YEARS				The Administrative Office Management program develops an enhanced skill-set to increase potential for obtaining a supervisory or managerial position in an office environment.
<b>ADVANCED ACCOUNTING POST-DIPLOMA CERTIFICATE</b>	1 YEAR	Graduation from a Business Administration diploma in Accounting or equivalent at an accredited post-secondary institution with completion of the following courses (or their equivalents) with a grade of C (60%) or higher: <ul style="list-style-type: none"> <li>• ACCT 213 &amp; ACCT 215</li> <li>• MGMT 284 &amp; MGMT 285</li> <li>• FINA 255</li> </ul>	Graduation from a Business Administration diploma in Accounting or equivalent at an accredited post-secondary institution with completion of the following courses (or their equivalents) with a grade of C (60%) or higher: <ul style="list-style-type: none"> <li>• ACCT 213 &amp; ACCT 215</li> <li>• MGMT 284 &amp; MGMT 285</li> <li>• FINA 255</li> </ul>	Graduation from a Business Administration diploma in Accounting or equivalent at an accredited post-secondary institution with completion of the following courses (or their equivalents) with a grade of C (60%) or higher: <ul style="list-style-type: none"> <li>• ACCT 213 &amp; ACCT 215</li> <li>• MGMT 284 &amp; MGMT 285</li> <li>• FINA 255</li> </ul>	Career opportunities for graduates may include accounting technician, accounts payable or accounts receivable clerk, bookkeeper, or CPA trainee.
<b>AVIATION MANAGEMENT CERTIFICATE</b> Refer to Super T Aviation for additional requirements for Integrated Flight Training	2 YEARS	High school diploma with: <ul style="list-style-type: none"> <li>• ELA 30-1 or ELA 30-2</li> <li>• Math 30-1 or Math 30-2</li> <li>• Science 30 or Physics 20</li> </ul> Enrolment in the Super T Aviation Integrated Airline License Program	High school diploma with: <ul style="list-style-type: none"> <li>• ELA 30</li> <li>• Pre-Calculus 30 or Foundations of Math 30</li> <li>• Earth Science 30 or Physical Science 20</li> </ul> Enrolment in the Super T Aviation Integrated Airline License Program	<ul style="list-style-type: none"> <li>• ELA 30-1 or ELA 30-2</li> <li>• Math 30-1 or Math 30-2</li> <li>• Science 30 or Physics 20</li> </ul> Enrolment in the Super T Aviation Integrated Airline License Program	Aviation Management graduates who also complete flight training may find employment as a flight instructor, Medevac pilot, charter pilot, or commuter pilot for smaller airlines.
<b>BUILT ENVIRONMENT ENGINEERING TECHNOLOGY (BEET) DIPLOMA</b>	2 YEARS	High school diploma with: <ul style="list-style-type: none"> <li>• ELA 30-1 or ELA 30-2</li> <li>• Math 30-1 or Math 30-2</li> <li>• Physics 20</li> </ul>	High school diploma with: <ul style="list-style-type: none"> <li>• ELA 30</li> <li>• Pre-Calculus 30 or Foundations of Math 30</li> <li>• Physical Science 20</li> </ul>	<ul style="list-style-type: none"> <li>• ELA 30-1 or ELA 30-2</li> <li>• Math 30-1 or Math 30-2</li> <li>• Physics 20</li> </ul>	Career opportunities may be found working with consulting engineers, architects and land surveyors in a variety of industries and sectors including oil and gas, mining and manufacturing, product and equipment design and manufacturing, and all levels of government.
<b>BUSINESS ADMINISTRATION DIPLOMA</b>	2 YEARS	<ul style="list-style-type: none"> <li>• ELA 30-1 or ELA 30-2</li> <li>• Math 30-1 or Math 30-2</li> <li>• Two 30-level, 5-credit subjects</li> </ul>	<ul style="list-style-type: none"> <li>• ELA 30</li> <li>• Pre-Calculus 30 or Foundations of Math 30</li> <li>• Two 30-level subjects</li> </ul>	<ul style="list-style-type: none"> <li>• ELA 30-1 or ELA 30-2</li> <li>• Math 30-1 or Math 30-2</li> </ul>	<b>Accounting Major:</b> Graduates are prepared to find work as an accounting technician, accounts payable or accounts receivable clerk, bookkeeper, or CPA trainee. <b>Financial Services Major:</b> Graduates are prepared for financial advisor, credit officer, or loans officer positions. <b>Management Major:</b> Employment may be found as an office manager or project coordinator. <b>Marketing Major:</b> Possible career opportunities may include promotions coordinator, public relations assistant, or event marketing representative.
<b>CHILD &amp; YOUTH CARE COUNSELLOR DIPLOMA</b>	2 YEARS	<ul style="list-style-type: none"> <li>• ELA 30-1 (min. 60%) or ELA 30-2 (min. 70%)</li> <li>• One 30-level academic subject (min. 60%)</li> <li>• Three 30-level, 5-credit subjects (min. 60%), with a maximum of 5-credits of CTS courses</li> </ul>	<ul style="list-style-type: none"> <li>• ELA 30 (min. 60%)</li> <li>• One 30-level academic subject (min. 60%)</li> <li>• Three 30-level subjects (min. 60%)</li> </ul>	<ul style="list-style-type: none"> <li>• ELA 30-1 (min. 60%) or ELA 30-2 (min. 70%)</li> <li>• One 30-level academic subject</li> </ul>	Job opportunities may be found in group homes, residential treatment centres, institutional or young offender settings, and mental health centres facilitating a variety of activity including outreach/street programs, family and community based programs, therapeutic foster care, or day treatment programs.
<b>COMPUTER AIDED DRAFTING &amp; DESIGN CERTIFICATE</b>	1 YEAR	High school diploma with: <ul style="list-style-type: none"> <li>• ELA 30-1 or ELA 30-2</li> <li>• Math 30-1 or Math 30-2</li> <li>• Physics 20</li> </ul>	High school diploma with: <ul style="list-style-type: none"> <li>• ELA 30</li> <li>• Pre-Calculus 30 or Foundations of Math 30</li> <li>• Physical Science 20</li> </ul>	<ul style="list-style-type: none"> <li>• ELA 30-1 or ELA 30-2</li> <li>• Math 30-1 or Math 30-2</li> <li>• Physics 20</li> </ul>	Career opportunities may be found working with consulting engineers, architects and land surveyors in a variety of industries and sectors including oil and gas, mining and manufacturing, product and equipment design and manufacturing, and all levels of government.
<b>CRIMINAL JUSTICE DIPLOMA</b>	2 YEARS	<ul style="list-style-type: none"> <li>• ELA 30-1 (min. 60%) or ELA 30-2 (min. 65%)</li> </ul>	<ul style="list-style-type: none"> <li>• ELA 30 (min. 60%)</li> </ul>	<ul style="list-style-type: none"> <li>• ELA 30-1 (min. 60%) or ELA 30-2 (min. 65%)</li> </ul>	For graduates of the Criminal Justice program, careers may include police officer, crime analyst, private or corporate investigator, correctional/parole/probation officer, youth worker or customs officer.
<b>DATA ANALYTICS FOR BUSINESS CERTIFICATE</b> <b>NEW</b>	1 YEAR	Two 30-level 5-credit subjects with 50% or higher, current employment with a letter of support from employer	Two 30-level subjects with 50% or higher and current employment with a letter of support from employer	Two 30-level 5-credit subjects with 50% or higher, current employment with a letter of support from employer	The certificate is an opportunity for a working professionals to add to their expertise. Some career outcomes may require a degree and/or work experiences and may include: advertising, banking and financial institutions, education, healthcare, human resource, insurance, marketing, manufacturing, federal, provincial and municipal organizations and government, transportation, organizational in-house.
<b>EARLY LEARNING &amp; CHILD CARE CERTIFICATE / DIPLOMA</b>	1 YEAR 2 YEARS	High school diploma with: <ul style="list-style-type: none"> <li>• ELA 30-1 (min. 50%) or ELA 30-2 (min. 65%)</li> </ul>	High school diploma with: <ul style="list-style-type: none"> <li>• ELA 30 (min. 50%)</li> </ul>	<ul style="list-style-type: none"> <li>• ELA 30-1 (min. 50%) or ELA 30-2 (min. 65%)</li> </ul>	Job opportunities may be found with preschools, child care centres, family day homes, out of school care, and assistants in kindergarten programs.



Scan the QR code to watch the video.

Flex

Flex

Flex

\*FOR OTHER PROVINCIAL EQUIVALENCIES AND A LIST OF ACADEMIC SUBJECTS, SEE PAGE 35.



# CERTIFICATES & DIPLOMAS

1-2 year programs

PROGRAM	LENGTH	ALBERTA ADMISSION REQUIREMENTS	SASKATCHEWAN ADMISSION REQUIREMENTS	MATURE ADMISSION REQUIREMENTS (AGE 21 OR OLDER)	CAREER OPPORTUNITIES
<b>ENVIRONMENTAL BIOLOGY AND RECLAMATION TECHNOLOGY DIPLOMA</b> (formerly Environmental Reclamation Technician)	2 YEARS	High school diploma with: <ul style="list-style-type: none"> <li>• ELA 30-1 (min. 50%) or ELA 30-2 (min. 60%)</li> <li>• Biology 20 (min. 55%)</li> <li>• Chemistry 30 (min. 55%) or Science 30 (min. 55%)</li> <li>• Math 30-1 (min. 55%) or Math 30-2 (min. 55%)</li> </ul>	High school diploma with: <ul style="list-style-type: none"> <li>• ELA 30 (min. 50%)</li> <li>• Environmental Science 20 (min. 55%) or Health Science 20 (min. 55%) [Recommended Environmental Science 20]</li> <li>• Chemistry 30 (min. 55%) or Earth Science 30 (min. 55%)</li> <li>• Pre-Calculus 30 (min. 55%) or Foundations of Math 30 (min. 55%)</li> </ul>	<ul style="list-style-type: none"> <li>• ELA 30-1 (min. 50%) or ELA 30-2 (min. 60%)</li> <li>• Biology 20 (min. 55%)</li> <li>• Chemistry 30 (min. 55%) or Science 30 (min. 55%)</li> <li>• Math 30-1 (min. 55%) or Math 30-2 (min. 55%)</li> </ul>	Graduates of Environmental Biology and Reclamation Technology are prepared for field-based or office-based work with private or government agencies involved with environmental monitoring, site mediation and reclamation, resource reclamation, well decommissioning, or environmental impact and audit studies.
<b>HEALTH CARE AIDE CERTIFICATE</b> Offered at both Medicine Hat Campus and Brooks Campus for Fall intake  Available blended (online/in-person) for Winter intake	1 YEAR	One of the following: <ul style="list-style-type: none"> <li>• ELA 20-1 (min. 60%) or ELA 20-2 (min. 60%)</li> </ul> OR <ul style="list-style-type: none"> <li>• ELA 30-1 (min. 55%) or ELA 30-2 (min. 55%)</li> </ul> OR <ul style="list-style-type: none"> <li>• Pass all five Canadian GED tests</li> </ul> OR <ul style="list-style-type: none"> <li>• ACCUPLACER reading and writing tests with a minimum score of 237 in each category</li> </ul>	One of the following: <ul style="list-style-type: none"> <li>• ELA 20 (min. 60%)</li> </ul> OR <ul style="list-style-type: none"> <li>• ELA 30 (min. 55%)</li> </ul> OR <ul style="list-style-type: none"> <li>• Pass all five Canadian GED tests</li> </ul> OR <ul style="list-style-type: none"> <li>• ACCUPLACER reading and writing tests with a minimum score of 237 in each category</li> </ul>	One of the following: <ul style="list-style-type: none"> <li>• ELA 20-1 (min. 60%) or ELA 20-2 (min. 60%)</li> </ul> OR <ul style="list-style-type: none"> <li>• ELA 30-1 (min. 55%) or ELA 30-2 (min. 55%)</li> </ul> OR <ul style="list-style-type: none"> <li>• Pass all five Canadian GED tests</li> </ul> OR <ul style="list-style-type: none"> <li>• ACCUPLACER reading and writing tests with a minimum score of 237 in each category</li> </ul>	Career opportunities for Health Care Aide graduates can be found in continuing care facilities, assisted living facilities, community agencies, and with government or private individuals.
<b>HUMANITIES &amp; SOCIAL SCIENCES DIPLOMA</b>	2 YEARS	<ul style="list-style-type: none"> <li>• ELA 30-1</li> <li>• Math 30-1 or Math 30-2 or a 30-level second language</li> <li>• Two 30-level academic subjects</li> <li>• One 30-level, 5-credit subject (excluding Special Projects)</li> </ul>	<ul style="list-style-type: none"> <li>• ELA 30</li> <li>• Pre-Calculus 30 or Foundations of Math 30 or a 30-level second language</li> <li>• Two 30-level academic subjects</li> <li>• One 30-level subject (excluding Special Projects)</li> </ul>	<ul style="list-style-type: none"> <li>• ELA 30-1</li> <li>• One 30-level academic subject</li> </ul>	Graduates are prepared with fundamental, personal management, and team work skills that are required for the rapidly changing workplace and can be applied to a variety of career environments.
<b>INFORMATION TECHNOLOGY CERTIFICATE / DIPLOMA</b>	1 YEAR 2 YEARS	<ul style="list-style-type: none"> <li>• ELA 30-1 (min. 50%) or ELA 30-2 (min. 60%)</li> <li>• Math 30-1 (min. 50%) or Math 20-1 (min. 65%) or Math 30-2 (min. 65%)</li> </ul>	<ul style="list-style-type: none"> <li>• ELA 30 (min. 50%)</li> <li>• Pre-Calculus 30 (min. 50%) or Pre-Calculus 20 (min. 65%) or Foundations of Math 30 (min. 65%)</li> </ul>	<ul style="list-style-type: none"> <li>• ELA 30-1 (min. 50%) or ELA 30-2 (min. 60%)</li> <li>• Math 30-1 (min. 50%) or Math 20-1 (min. 65%) or Math 30-2 (min. 65%)</li> </ul>	Graduates may find employment in entry-level program and software development, web design and development, database development, and software or computer sales and support.
<b>INTERMEDIATE ACCOUNTING POST-DIPLOMA CERTIFICATE</b>	1 YEAR	Graduation from a Business Administration degree, diploma or equivalent at an accredited post-secondary institution with completion of the following courses (or their equivalents): <ul style="list-style-type: none"> <li>• ACCT 113 or ACCT 321</li> </ul>	Graduation from a Business Administration degree, diploma or equivalent at an accredited post-secondary institution with completion of the following courses (or their equivalents): <ul style="list-style-type: none"> <li>• ACCT 113 or ACCT 321</li> </ul>	Graduation from a Business Administration degree, diploma or equivalent at an accredited post-secondary institution with completion of the following courses (or their equivalents): <ul style="list-style-type: none"> <li>• ACCT 113 or ACCT 321</li> </ul>	Career opportunities may include accounting technician, accounts payable or accounts receivable clerk, bookkeeper, and CPA trainee.
<b>KINESIOLOGY DIPLOMA</b> <span style="background-color: #f4a460; padding: 2px;">NEW</span>	2 YEARS	An overall average of 60% with no mark below 50% in: <ul style="list-style-type: none"> <li>• ELA 30-1</li> <li>• Biology 30</li> <li>• Math 30-1 or Math 30-2</li> <li>• one 30-level academic subject</li> <li>• one 30-level grade 12 5-credit subject (excluding special projects)</li> </ul>	An overall average of 60% with no mark below 50% in: <ul style="list-style-type: none"> <li>• ELA 30</li> <li>• Biology 30</li> <li>• Pre-Calculus 30 or Foundations of Math 30</li> <li>• One 30-level academic subject</li> <li>• One 30-level subject (excluding Special Projects)</li> </ul>	<ul style="list-style-type: none"> <li>• ELA 30-1</li> <li>• Biology 30</li> <li>• Math 30-1 or 30-2</li> </ul>	Completion of a Kinesiology diploma prepares graduates to work as entry-level exercise professionals in a variety of fitness, health, sports, and recreation environments. Employment opportunities may include fitness programmer, personal trainer, wellness specialist, coach or sports program supervisor.  Graduates can also obtain the Certified Personal Trainer certification through the Canadian Society of Exercise Physiology.
<b>MARKETING &amp; DESIGN POST-DIPLOMA CERTIFICATE</b> <span style="background-color: #f4a460; padding: 2px;">NEW</span>	1 YEAR	Graduate from a diploma at an accredited Post-Secondary Institution	Graduate from a diploma at an accredited Post-Secondary Institution	Graduate from a diploma at an accredited Post-Secondary Institution	Graduates may find increased employment opportunities by enhancing their existing skills and qualifications to take on more advanced roles in marketing and communications within the rapidly changing world of business. Some of the exciting career opportunities include search engine optimization specialist, social media manager, content marketer, or web designer.

\*FOR OTHER PROVINCIAL EQUIVALENCIES AND A LIST OF ACADEMIC SUBJECTS, SEE PAGE 35.



# CERTIFICATES & DIPLOMAS

1-2 year programs

PROGRAM	LENGTH	ALBERTA ADMISSION REQUIREMENTS	SASKATCHEWAN ADMISSION REQUIREMENTS	MATURE ADMISSION REQUIREMENTS (AGE 21 OR OLDER)	CAREER OPPORTUNITIES
<b>OCCUPATIONAL / PHYSICAL THERAPIST ASSISTANT DIPLOMA</b> Also offered online	2 YEARS	High school diploma with a minimum of 60% in: • ELA 30-1 • Biology 30 • Math 30-1, Math 30-2 or a 30-level Science • One 30-level, 5-credit subject	High school diploma with a minimum of 60% in: • ELA 30 • Biology 30 • Pre-Calculus 30, Foundations of Math 30 or a 30-level Science • One 30-level subject	A minimum of 60% in: • ELA 30-1 • Biology 30	Graduates may find employment with health regions and hospitals, rehabilitation centres, continuing care facilities, schools, community and government health agencies, or vocational rehabilitation programs.
<b>POWER ENGINEERING TECHNOLOGY DIPLOMA</b>	2 YEARS	A minimum of 60% in each: • ELA 20-1 or ELA 20-2 • Math 30-1 or Math 30-2 • Physics 20  Even though a high school diploma is not required for program admission, some employers may require it.	A minimum of 60% in each: • ELA 20 • Pre-Calculus 30 or Foundations of Math 30 • Physical Science 20  Even though a high school diploma is not required for program admission, some employers may require it.	A minimum of 60% in each: • ELA 20-1 or ELA 20-2 • Math 30-1 or Math 30-2 • Physics 20  Even though a high school diploma is not required for program admission, some employers may require it.	Power Engineering Technology graduates are prepared for employment at gas plants, oil refineries, petrochemical processing plants, fertilizer production or power generating plants, and building complexes.
* <b>PRACTICAL NURSE DIPLOMA</b> Offered at Brooks Campus for Fall intake and Medicine Hat Campus for Winter intake	2 YEARS	• ELA 30-1 (min. 60%) or ELA 30-2 (min. 70%) • Math 20-1 (min. 60%) or Math 20-2 (min. 70%) • Biology 30 (min. 60%)	• ELA 30 (min. 60%) • Pre-Calculus 20 (min. 60%) or Foundations of Math 20 (min. 70%) • Biology 30 (min. 60%)	• ELA 30-1 (min. 60%) or ELA 30-2 (min. 70%) • Math 20-1 (min. 60%) or Math 20-2 (min. 70%) • Biology 30 (min. 60%)	Graduates of the Practical Nurse program may find career opportunities in hospitals, medical clinics, continuing care facilities, assisted living facilities, and community agencies.
<b>SERVICE DOG &amp; CANINE STUDIES MANAGEMENT DIPLOMA</b>	2 YEARS	• ELA 30-1 or ELA 30-2 • Science 30 or Biology 20 • One 30-level, 5 credit subject	• ELA 30 • Health Sciences 20, Environmental Science 20 or Earth Science 30 (Recommended: Health Sciences 20) • One 30-level subject	• ELA 30-1 or ELA 30-2 • Any 30-level Science is recommended	Career opportunities may include owning and operating a kennel, dog grooming business, or training operation, or training dogs that assist individuals living with a variety of disabilities including autism, PTSD, diabetes, epilepsy, those who are hard of hearing, or have physical or medical disabilities.
<b>SOCIAL WORK DIPLOMA</b> APPLICATION DEADLINE MAY 1	2 YEARS	A minimum of 60% in each of the following: • ELA 30-1 • Two 30-level academic subjects • One 30-level, 5-credit subject	A minimum of 60% in each of the following: • ELA 30 • Two 30-level academic subjects • One 30-level subject	A minimum of 60% in each of the following: • ELA 30-1 or transferable equivalent • Two 30-level academic subjects or post-secondary transfer courses	Graduates may find employment with government departments, school boards, group homes and residential services, health and mental health agencies, family and social service agencies, employment assistance, correctional services and agencies, addictions services, or non-profit community agencies.
<b>SPEECH-LANGUAGE PATHOLOGIST ASSISTANT DIPLOMA</b> Also offered online	2 YEARS	High school diploma with a minimum of 60% in: • ELA 30-1 • Biology 30 • Math 30-1, Math 30-2 or a 30-level Science • One 30-level, 5-credit subject	High school diploma with a minimum of 60% in: • ELA 30 • Biology 30 • Pre-Calculus 30, Foundations of Math 30 or a 30-level Science • One 30-level subject	A minimum of 60% in: • ELA 30-1 • Biology 30	Speech Language Pathologist Assistants are prepared to find employment with health regions, hospitals, schools, day cares and preschools, rehabilitation centres, and private practices.
<b>SPORT &amp; EVENT MARKETING AND MANAGEMENT DIPLOMA</b>	2 YEARS	• ELA 30-1 or ELA 30-2 • Two 30-level, 5-credit subjects	• ELA 30 • Two 30-level subjects	• ELA 30-1 or ELA 30-2	Career opportunities may include entertainment account coordinator, sport/event marketing coordinator, experiential marketing or fan experience coordinator, social media/digital marketing coordinator, brand ambassador, recreation/athletics coordinator, or sports agent. Market research, advertising and sales, sponsorship, event management, public relations, or merchandising are examples of related activity.
<b>SUSTAINABLE ENERGY SYSTEMS PROFESSIONAL CERTIFICATE</b> NEW	1 YEAR	• ELA 30-1 or ELA 30-2	• ELA 30	• ELA 30-1 or ELA 30-2 or • 10+ years of industry experience, or Journeyman or Red Seal Certification	Graduates may find employment across almost all public or private sectors that engage in the design and construction of the built environment. Positions within different sectors of Canada include management of construction, operation and management of facilities, renewable energy generation industries, and building management and renovation. Self-employment opportunities include professional consulting in auditing, design and supervision.
<b>SUSTAINABLE INNOVATION DIPLOMA</b>	2 YEARS	• ELA 30-1 or ELA 30-2 • Two 30-level, 5-credit subjects	• ELA 30 • Two 30-level subjects	• ELA 30-1 or ELA 30-2	Possible careers include research and development coordinator, marketing and innovation project coordinator, service representative, or sustainable construction specialist.



Scan the QR code to watch the video.



Scan the QR code to watch the video.



Scan the QR code to watch the video.

\* COMPETITIVE ENTRANCE (REFER TO PAGE 35 FOR MORE DETAILS)

\*FOR OTHER PROVINCIAL EQUIVALENCIES AND A LIST OF ACADEMIC SUBJECTS, SEE PAGE 35.



# APPLIED DEGREES & DEGREES

## 3-4 year programs

Unless otherwise stated, a minimum grade of 50% is required for all subjects.

PROGRAM	LENGTH	ALBERTA ADMISSION REQUIREMENTS	SASKATCHEWAN ADMISSION REQUIREMENTS	MATURE ADMISSION REQUIREMENTS (AGE 21 OR OLDER)	CAREER OPPORTUNITIES
<b>ART &amp; DESIGN, BACHELOR OF APPLIED ARTS</b>	3 YEARS	<ul style="list-style-type: none"> <li>• ELA 30-1 or ELA 30-2</li> </ul>	<ul style="list-style-type: none"> <li>• ELA 30</li> </ul>	<ul style="list-style-type: none"> <li>• ELA 30-1 or ELA 30-2</li> </ul>	Employment opportunities are available in a variety of workplace locations, including print shops, design studios, publishing houses, film studios, television stations, theatres, museums and art galleries, and other places involved in visual and digital production. Many Art & Design graduates have gone on to start their own graphic design, photography, and video production businesses.
* <b>EDUCATION, BACHELOR OF IN PARTNERSHIP WITH MOUNT ROYAL UNIVERSITY</b> <b>APPLICATION DEADLINE MAY 1</b>	2 YEARS + 2 YEARS	To be eligible for admissions a student must have successfully completed 60 credits of approved university course work and meet competitive GPA.  To complete university coursework, students will enroll in University Transfer: Education for their first two years at MHC. <b>Refer to University Transfer: Education on page 32 for admission requirements.</b>	To be eligible for admissions a student must have successfully completed 60 credits of approved university course work and meet competitive GPA.  To complete university coursework, students will enroll in University Transfer: Education for their first two years at MHC. <b>Refer to University Transfer: Education on page 32 for admission requirements.</b>	To be eligible for admissions a student must have successfully completed 60 credits of approved university course work and meet competitive GPA.  To complete university coursework, students will enroll in University Transfer: Education for their first two years at MHC. <b>Refer to University Transfer: Education on page 32 for admission requirements.</b>	Professional opportunities may include teacher, educational administrator, or policy maker.
* <b>NURSING, BACHELOR OF SCIENCE IN PARTNERSHIP WITH THE UNIVERSITY OF CALGARY</b> <b>APPLICATION DEADLINE MAY 1</b>	4 YEARS	Overall average of 65% with no mark below 50% in: <ul style="list-style-type: none"> <li>• ELA 30-1</li> <li>• Biology 30</li> <li>• Chemistry 30 or Science 30</li> <li>• Math 30-1 or Math 30-2</li> <li>• One 30-level, 5 credit subject</li> </ul>	Overall average of 65% with no mark below 50% in: <ul style="list-style-type: none"> <li>• ELA 30</li> <li>• Biology 30</li> <li>• Chemistry 30</li> <li>• Pre-Calculus 30 or Foundations of Math 30</li> <li>• One 30-level subject</li> </ul>	Overall average of 65% with no mark below 50% in: <ul style="list-style-type: none"> <li>• ELA 30-1</li> <li>• Biology 30</li> <li>• Chemistry 30 or Science 30</li> <li>• Math 30-1 or Math 30-2</li> </ul>	Graduates may find employment with regional health authorities, clinics (medical, dental and community), nursing homes, home care agencies, large corporations and insurance companies, or government services (e.g. penitentiaries).
* <b>PARAMEDIC, BACHELOR OF APPLIED HEALTH SCIENCE</b> Students will be required to complete a computer based online assessment (Casper Test) in addition to meeting competitive academic requirements. <b>APPLICATION DEADLINE APRIL 20</b>	4 YEARS	Overall average of 60% with no mark below 50% in: <ul style="list-style-type: none"> <li>• ELA 30-1</li> <li>• Biology 30</li> <li>• Math 30-1 or Math 30-2</li> <li>• One 30-level, 5 credit subject (Chemistry 30 is recommended)</li> </ul>	Overall average of 60% with no mark below 50% in: <ul style="list-style-type: none"> <li>• ELA 30</li> <li>• Biology 30</li> <li>• Pre-Calculus 30 or Foundations of Math 30</li> <li>• One 30-level subject (Chemistry 30 is recommended)</li> </ul>	Overall average of 60% with no mark below 50% in: <ul style="list-style-type: none"> <li>• ELA 30-1</li> <li>• Biology 30</li> <li>• Math 30-1 or Math 30-2</li> </ul>	Graduates may find employment with public and private ambulance services provincially, nationally and internationally. Paramedics also work in a variety of industrial and community-based emergency health settings.



Art & Design students Emily Adcock, Grace Mastel and Kylah Wirsch shared their creativity with the college community in 2024 by designing and painting a mural in the student lounge to celebrate wellness, positivity, and self-care.

*student voice*

**GRACE MASTEL**  
 Bachelor of Applied Arts, Art & Design

"Through its creation, the mural served as a reminder of the self-care and mental wellness we need in our daily lives. Our hope is that it reminds those who pass by to do all the little things for themselves and others that act as a balm to the soul."

\* COMPETITIVE ENTRANCE (REFER TO PAGE 35 FOR MORE DETAILS)

\*FOR OTHER PROVINCIAL EQUIVALENCIES AND A LIST OF ACADEMIC SUBJECTS, SEE PAGE 35.



# UNIVERSITY TRANSFER

start your degree here

PROGRAM	ALBERTA ADMISSION REQUIREMENTS	SASKATCHEWAN ADMISSION REQUIREMENTS	MATURE ADMISSION REQUIREMENTS (AGE 21 OR OLDER)	CAREER OPPORTUNITIES
<b>ARTS</b> <b>VARIETY OF MAJORS</b>	<ul style="list-style-type: none"> <li>• ELA 30-1</li> <li>• Math 30-1 or Math 30-2 or a 30-level second language</li> <li>• Two 30-level academic subjects</li> <li>• One 30-level, 5 credit subject (excluding Special Projects)</li> </ul> <p><i>NOTE: Some majors at some universities require Math 30-1 or Math 30-2.</i></p>	<ul style="list-style-type: none"> <li>• ELA 30</li> <li>• Pre-Calculus 30 or Foundations of Math 30 or a 30-level second language</li> <li>• Two 30-level academic subjects</li> <li>• One 30-level subject (excluding Special Projects)</li> </ul> <p><i>NOTE: Some majors at some universities require Pre-Calculus 30 or Foundations of Math 30.</i></p>	<ul style="list-style-type: none"> <li>• ELA 30-1</li> <li>• One 30-level academic subject</li> </ul> <p><i>NOTE: Some majors at some universities require Math 30-1 or Math 30-2.</i></p>	<p>An education in Arts can serve as the foundation for many different areas of interest. Some professional degree programs offered at universities, such as Law, require a degree in a discipline such as Arts before admission is granted.</p>
<b>COMMERCE / MANAGEMENT</b>	<ul style="list-style-type: none"> <li>• ELA 30-1</li> <li>• Math 30-1</li> <li>• Two 30-level academic subjects</li> <li>• One 30-level, 5 credit subject (excluding Special Projects)</li> </ul>	<ul style="list-style-type: none"> <li>• ELA 30</li> <li>• Pre-Calculus 30</li> <li>• Two 30-level academic subjects</li> <li>• One 30-level subject (excluding Special Projects)</li> </ul>	<ul style="list-style-type: none"> <li>• ELA 30-1</li> <li>• Math 30-1</li> </ul>	<p>Depending on the chosen major, graduates of a Commerce, Business Administration or Management degree program may find work as an accounting technician, event marketing representative, marketing researcher, accounts manager trainee, event coordinator, merchandiser/buyer, accounts payable or accounts receivable clerk, office manager or fundraiser.</p>
<b>EDUCATION</b> <b>APPLICATION DEADLINE MAY 1</b>	<ul style="list-style-type: none"> <li>• ELA 30-1 (min. 60%)</li> <li>• Three 30-level academic subjects</li> <li>• One 5-credit or two 3-credit subjects at the 30-level (excluding Special Projects)</li> </ul> <p><i>NOTE: Although not required for admission, it is strongly suggested that students entering Education possess Math 30-1 or Math 30-2.</i></p>	<ul style="list-style-type: none"> <li>• ELA 30 (min. 60%)</li> <li>• Three 30-level academic subjects</li> <li>• One 30-level subject (excluding Special Projects)</li> </ul> <p><i>NOTE: Although not required for admission, it is strongly suggested that students entering Education possess Pre-Calculus 30 or Foundations of Math 30.</i></p>	<ul style="list-style-type: none"> <li>• ELA 30-1 (min. 60%)</li> <li>• Pre-requisite courses required, e.g. Chem 30 required for university level Chemistry</li> </ul> <p><i>NOTE: Although not required for admission, it is strongly suggested that students entering Education possess Math 30-1 or Math 30-2.</i></p>	<p>Professional opportunities may include teacher, educational administrator or policy maker.</p>
<b>KINESIOLOGY</b> Must apply under University Transfer Bachelor of Science	<ul style="list-style-type: none"> <li>• ELA 30-1</li> <li>• Biology 30</li> <li>• Chemistry 30</li> <li>• Math 30-1</li> <li>• One 30-level, 5 credit subject (excluding special projects) Physics 30 recommended.</li> </ul>	<ul style="list-style-type: none"> <li>• ELA 30</li> <li>• Pre-Calculus 30</li> <li>• Biology 30</li> <li>• Chemistry 30</li> <li>• One 30-level subject (excluding Special Projects)</li> </ul> <p><i>NOTE: Students should be aware that some universities require Physics 30</i></p>	<ul style="list-style-type: none"> <li>• ELA 30-1</li> <li>• Biology 30</li> <li>• Chemistry 30</li> <li>• Math 30-1</li> </ul> <p><i>NOTE: Students should be aware that some universities require Physics 30</i></p>	<p>Possible careers include coach, exercise physiologist, athletic therapist, fitness specialist, consultant, researcher, adaptive physical activity specialist, athletic director, recreation coordinator, registered kinesiologists.</p>
<b>PRE-PROFESSIONAL PROGRAMS</b> <ul style="list-style-type: none"> <li>• PRE-DENTAL HYGIENE</li> <li>• PRE-DENTISTRY</li> <li>• PRE-MEDICAL LABORATORY SCIENCE</li> <li>• PRE-MEDICINE</li> <li>• PRE-NUTRITION</li> <li>• PRE-PHARMACY</li> <li>• PRE-VETERINARY</li> </ul>	<p>Refer to University Transfer Science below for admission requirements.</p> <p><i>Students will apply to University Transfer: Science.</i></p>	<p>Refer to University Transfer Science below for admission requirements.</p> <p><i>Students will apply to University Transfer: Science.</i></p>	<p>Refer to University Transfer Science below for admission requirements.</p> <p><i>Students will apply to University Transfer: Science.</i></p>	<p>Career choices vary depending on which pre-professional program is chosen.</p>
<b>SCIENCE</b> <b>VARIETY OF MAJORS</b>	<ul style="list-style-type: none"> <li>• ELA 30-1</li> <li>• Math 30-1</li> <li>• Any two of Biology 30, Chemistry 30 or Physics 30</li> </ul> <p><i>NOTE: Students should be aware that different majors will require different combinations of Science courses.</i></p>	<ul style="list-style-type: none"> <li>• ELA 30</li> <li>• Pre-Calculus 30</li> <li>• Any two of Biology 30, Chemistry 30 or Physics 30</li> </ul> <p><i>NOTE: Students should be aware that different majors will require different combinations of Science courses.</i></p>	<ul style="list-style-type: none"> <li>• ELA 30-1</li> <li>• Math 30-1</li> <li>• Any two of Biology 30, Chemistry 30 or Physics 30</li> </ul> <p><i>NOTE: Students should be aware that different majors will require different combinations of Science courses.</i></p>	<p>Career choices vary depending on which science major or professional degree is selected.</p>
<b>SOCIAL WORK</b> Must apply under University Transfer Bachelor of Arts	<ul style="list-style-type: none"> <li>• ELA 30-1</li> <li>• Math 30-1 or Math 30-2 or a 30-level second language</li> <li>• Two 30-level academic subjects</li> <li>• One 30-level, 5 credit subject (excluding Special Projects)</li> </ul> <p><i>Note: Some universities require Social 30-1 or Aboriginal Studies 30.</i></p>	<ul style="list-style-type: none"> <li>• ELA 30</li> <li>• Pre-Calculus 30 or Foundations of Math 30 or a 30-level second language</li> <li>• Two 30-level academic subjects</li> <li>• One 30-level subject (excluding Special Projects)</li> </ul> <p><i>Note: Some universities require Social Studies 30, History 30 or Native Studies 30.</i></p>	<ul style="list-style-type: none"> <li>• ELA 30-1</li> <li>• One 30-level academic subject</li> </ul> <p><i>Note: Some universities require Social 30-1 or Aboriginal Studies 30.</i></p>	<p>Graduates may find employment opportunities with government departments, school boards, hospitals and continuing care organizations, mental health clinics, family and social service agencies, correctional services and agencies, or non-profit community agencies.</p>

**NOTE: Unless otherwise stated, mandatory courses require a minimum average of 60% for admission with no individual mark below 50% for admission into university transfer programs.**

\*FOR OTHER PROVINCIAL EQUIVALENCIES AND A LIST OF ACADEMIC SUBJECTS, SEE PAGE 35.



# APPRENTICESHIP

3-4 year programs

PROGRAM	LENGTH	ALBERTA ENTRANCE REQUIREMENTS	SASKATCHEWAN ENTRANCE REQUIREMENTS	MATURE ENTRANCE REQUIREMENTS (AGE 21 OR OLDER)
<b>CARPENTER</b>	4 YEARS	<ul style="list-style-type: none"> <li>• ELA 10-2</li> <li>• Math 10-3</li> </ul>	<ul style="list-style-type: none"> <li>• ELA 10</li> <li>• Workplace and Apprenticeship Math 10</li> </ul>	<ul style="list-style-type: none"> <li>• ELA 10-2</li> <li>• Math 10-3</li> </ul>
<b>WELDER</b>	3 YEARS	OR <ul style="list-style-type: none"> <li>• pass all five Canadian GED tests</li> <li>OR</li> <li>• Entrance Exam</li> </ul>	OR <ul style="list-style-type: none"> <li>• pass all five Canadian GED tests</li> <li>OR</li> <li>• Entrance Exam</li> </ul>	OR <ul style="list-style-type: none"> <li>• pass all five Canadian GED tests</li> <li>OR</li> <li>• Entrance Exam</li> </ul>
<b>AUTOMOTIVE SERVICE TECHNICIAN</b>	4 YEARS	<ul style="list-style-type: none"> <li>• ELA 20-2</li> <li>• Math 20-3</li> <li>• Science 10</li> </ul>	<ul style="list-style-type: none"> <li>• ELA 20</li> <li>• Workplace and Apprenticeship Math 20</li> </ul>	<ul style="list-style-type: none"> <li>• ELA 20-2</li> <li>• Math 20-3</li> <li>• Science 10</li> </ul>
<b>ELECTRICIAN</b>	4 YEARS	OR <ul style="list-style-type: none"> <li>• pass all five Canadian GED tests</li> </ul>	<ul style="list-style-type: none"> <li>• Science 10</li> </ul>	OR <ul style="list-style-type: none"> <li>• pass all five Canadian GED tests</li> </ul>
<b>HEAVY EQUIPMENT TECHNICIAN</b>	4 YEARS	OR <ul style="list-style-type: none"> <li>• Entrance Exam</li> </ul>	OR <ul style="list-style-type: none"> <li>• pass all five Canadian GED tests</li> <li>OR</li> <li>• Entrance Exam</li> </ul>	OR <ul style="list-style-type: none"> <li>• Entrance Exam</li> </ul>
<b>PLUMBER</b>	4 YEARS			
<b>STEAMFITTER-PIPEFITTER</b>	4 YEARS			

Admissions are done through Alberta Apprenticeship and Industry Training.

MEDICINE HAT COLLEGE TRADES

403.529.3975

## HOW DO I START AN APPRENTICESHIP?

- **STEP 1**  
Find an employer willing to hire you as an apprentice.
- **STEP 2**  
Register as an apprentice.
- **STEP 3**  
Begin working and log your hours.
- **STEP 4**  
Attend technical training.



For more information,  
visit [tradesecrets.alberta.ca](http://tradesecrets.alberta.ca).





## COMPETITIVE ENTRANCE

Please note that some programs at Medicine Hat College follow a competitive admission process. This means that we receive more applications than there is space in the program and will admit students who possess the highest grades in the courses required for admission to that program. The minimum grade requirements listed for admission are rarely sufficient for a successful application.

The competitive admission average cannot be determined in advance as it depends on the grades achieved by others who are also applying to the same program. Students who are interested in a competitive program are encouraged to apply as early as possible. All applicants to competitive programs will have an admission decision no later than June 1 for Fall admission.

## ACADEMIC SUBJECTS

### ALBERTA:

- Aboriginal Studies 30
- Biology 30
- Chemistry 30
- Mathematics 30-1 or 30-2
- Mathematics 31
- Physics 30
- Science 30
- Social Studies 30-1
- One or more distinct 30-level language(s) (ex. French 30)
- 5 credits in advanced level CTS Computer Science (CSE)

### One of:

- Art 30 or Art 31
- Choral Music 30
- Dance 35
- Drama 30
- General Music 30
- Instrumental Music 30

### SASKATCHEWAN:

- Biology 30
- Calculus 30
- Chemistry 30
- Computer Science 30
- Earth Science 30
- Francais Fransaskois A30 or B30
- Geography 30
- History 30
- Pre-Calculus 30 or Foundations of Math 30
- Native Studies 30
- Physics 30
- Social Studies 30
- One or more distinct 30-level language(s) (ex. French 30)

### One of:

- Law 30
- Psychology 30

### One of:

- Arts Education 30
- Band 30
- Choral 30
- Dance 30
- Drama 30
- Instrumental Jazz 30
- Visual Art 30

### OTHER PROVINCES:

If you are from outside of Alberta or Saskatchewan, please view other provincial high school equivalencies for various subjects by going to [www.mhc.ab.ca/admission](http://www.mhc.ab.ca/admission).

Questions? Contact the Advising office at **403.529.3819**.







# How to apply

To apply or request more information, go to [www.mhc.ab.ca/admission](http://www.mhc.ab.ca/admission).

# Visit

## OPEN HOUSE

Want to experience MHC and learn more about our programs? MHC will host an Open House at the Medicine Hat Campus on **November 13, 2024**, and at the Brooks Campus on **November 6, 2024**. Check out the campus, learn more about our programs and connect with your future instructors. We'll support you through the application process so you finish the day one step closer to becoming an MHC student!

## BOOK A CAMPUS TOUR

Medicine Hat College offers campus tours to prospective students. This is a great opportunity to see our amazing facilities first-hand, and even view our student residence when available.

To book a campus tour, call **403.529.3819**.











[WWW.MHC.AB.CA](http://WWW.MHC.AB.CA)

MEDICINE HAT CAMPUS:  
299 COLLEGE DR. SE  
MEDICINE HAT, AB / T1A 3Y6

BROOKS CAMPUS:  
200 HORTICULTURAL STATION RD E  
BROOKS, AB / T1R 1E5

