

Your path.  
Your way.



MEDICINE HAT  
COLLEGE



INTERNATIONAL EDUCATION  
VIEWBOOK 2024 - 2025

**HELLO  
AANII [AWE-NEE]  
HÀU [HOW]  
OKI [OH-KEE]  
TAANSHI [TAWN-SHI]  
TÂN'SI [TAHN-SEH]**

*Medicine Hat College acknowledges and honours the traditional territories of the First Nation People of treaty 7 and Treaty 4, and of the Métis people who share a deep history with this land. We recognize and honour the land, history, ways of being, and our relationship with First Nation, Métis, and Inuit people as we forge together towards a relationship of reconciliation, respect, understanding, and healing.*



# Content

*02 - 03*

**WELCOME TO MHC**

Why choose MHC?  
Quick Facts

*04 - 05*

**STUDENTS' VOICES**

*06 - 07*

**MHC CAREER PROGRAMS**

Programs

*08 - 09*

**APPLY TO MHC**

*10 - 11*

**LIVE HERE**

Student Residence  
Off-Campus Housing

*12 - 13*

**THE CITY OF MEDICINE HAT**

Brooks

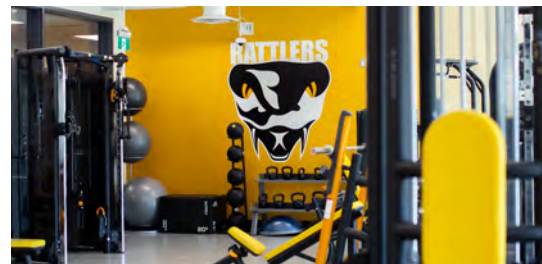


# Welcome to MHC

Medicine Hat College is dedicated to growing a vibrant future with learners and our region. Proudly serving the communities of southeastern Alberta while welcoming learners from around the globe.

Medicine Hat College offers more than 40 certificate, diploma, degrees, trades, and university studies programs. We meet learners where they are at and prepare them for success in college, in the workforce, and in life.

Medicine Hat College is located on the Canadian prairies in Medicine Hat, Alberta a city with a population of 65,000 people. A second campus in the city of Brooks is located 100km west of Medicine Hat.



## MHC AT A GLANCE

*Numbers based on most recent data available*



**AVERAGE CLASS SIZE IS 18 STUDENTS PER CLASS**



**MHC PROUDLY SERVES OVER 8,000 LEARNERS EACH YEAR**



**APPROXIMATELY 2,200 FULL-TIME & 1,450 PART-TIME STUDENTS**



## WHY CHOOSE MHC?

- MHC is a designated learning institution (DL# 018795445892)
- Comprehensive range of certificate, diploma, applied degree, degree & university studies programs
- Safe community environment
- Competitive international tuition fees. For more information about tuition and fees, visit: [www.mhc.ab.ca/en/student-life/financial-aid/tuition-and-fees](http://www.mhc.ab.ca/en/student-life/financial-aid/tuition-and-fees)
- High student satisfaction and employment rates
- Range of student support services, including: academic advising, career counselling, writing support, pre-arrival support & orientation, health insurance, immigration advising, and cultural activities.
- Strong transfer agreements mean hundreds of MHC courses transfer to universities in Alberta, Saskatchewan and beyond, including University of Alberta, University of Calgary, and University of Saskatchewan. For more information, visit [transferalberta.alberta.ca](http://transferalberta.alberta.ca)
- Affordable living costs, estimated \$45,000/year including tuition, accommodation, food and other expenses.

# Quick Facts

1965

Medicine Hat College started in **1965** and will celebrate its 60th anniversary in 2025 - 2026



MHC operates two campuses in Southeastern Alberta - one in **Medicine Hat** and one in **Brooks**



**97%** (2023) of recent graduates recommend MHC



**92%** (2022 - 2023) of employed grads are in their field of study



MHC students received almost **\$1 million** in financial awards last year



**Rattlers Athletics** compete in seven sports within the Alberta College Athletics Conference

SCAN ME



Can't wait to see our campus? Scan the QR code to take a virtual tour.

# Students' voices

“

Medicine Hat is comparable to the bigger city in Canada. Provides you with the best education with great price. High housing rates are growing issues in Canada.

However, in Medicine Hat, this aspect is not an issue because the city has affordable housings options. The program is more like a job environment. It gave me great experience and help me to work independently. After I graduate from the school.

”



**ALLAN, China**  
*Built Environment Engineering  
Technology (BEET) diploma*





**CLAUDIO**, Chile  
*Business Administration diploma*

I come from Santiago de Chile and here I love the city because of a smaller, slow pace city. It is great for the family. You can raise your kids here without problems and you are going to love it because it's so safe, everyone is nice to you. You have plenty of housing and employment opportunities. There is a lot of job postings. If you have the opportunity to live here in Canada, you are not going to regret it. Just come here.



**JUDINE**, Jamaica  
*Business Administration diploma*

I chose Medicine Hat College simply because I love that they are very attentive, have good review to say, and what I have seen from those who studied at the college, the teachers were very attentive. They were catered towards students need whether you are an international student or not, you felt at home and a part of college community. I've had positive experiences with my lecturers. They are very supportive. If I did not understand, I could ask questions. I would say the programs offered at Medicine Hat College are both practical and hands on because it helps to prepare you as a professional for the world of work.



**ASHISH**, India  
*Built Environment Engineering Technology (BEET) diploma*

Through this program, I was supported by helpful and knowledgeable instructors committed to delivering quality education that would support my future career. With my education, I am now working at an architecture firm in Alberta, where I can utilize the skills that I learned in school and apply them to my work. My time at the Medicine Hat College greatly prepared me for a career within the engineering/architectural field, and I would highly encourage future students to consider the BEET program.



**VICTOR**, Kenya  
*University Studies: Arts*

I decided MHC because it is a small town with a small population. It is a college with diverse people and a lot of international students I found it accommodating for me, especially as an international student. It has a good international community. I did not expect that at one point in my life I could say I have a Chinese friend, I have a Brazilian friend, I have a Nigerian friend. It is such an underrated city. If you are thinking of this college, do not even think twice. Just think Medicine Hat College because you won't be disappointed, you are just making the best choice.



**MEY LYNN**, Philippines  
*Administrative Office Management Diploma*

I love the public speaking classes and all the instructors are so responsive. So if I'm struggling they're always ready to help and go the extra mile. I believe my program has given me a good foundation. I love the welcoming community here in Medicine Hat. I noticed that there are diverse group of people like Indian and Filipino just like me. I love the environment here at the college and I love the people that I am with.

**MEET OUR STUDENTS**  
Scan the QR code





# MHC Career Programs

Certificate, diploma, applied degree, bachelor's degree and university studies. Whats the difference?

## CERTIFICATE

*Program Length: 1 year or less of full-time study*

Certificate programs prepare students for entry into specific occupations.

**Entrance Requirements:** Completion of some high school studies (often with specified grades and subjects).

## DIPLOMA

*Program Length: 2 years of full-time study*

Diploma programs prepare students for employment in a particular field or number of occupations.

**Entrance Requirements:** High school graduation (with specified grades and subjects).

## POST-DIPLOMA CERTIFICATE

*Program Length: Typically 1 year for post-diploma certificate*

Post-diploma Certificate programs are focused on increasing specialized skills.

**Entrance Requirements:** Often require previous completion of related credential.

## CAREER PROGRAMS REQUIREMENTS

STUDENTS APPLYING TO PROGRAMS MUST SUBMIT

- 1 Official transcripts from secondary and post-secondary schools (if applicable).
- 2 Proof of English proficiency: an IELTS overall band score of 6.0 with no band score less than 6.0

Health and Counselling programs have a higher English Language Proficiency Requirement of IELTS 7.0 or equivalent. For a full list of examinations and scores accepted, as well as list of English Language Proficiency exempt countries, please visit [www.mhc.ab.ca/en/information-for/international/study-at-mhc/english-language-requirements](http://www.mhc.ab.ca/en/information-for/international/study-at-mhc/english-language-requirements)

## APPLIED DEGREE

*Program Length: 3 -4 years of academic studies and related work term*

Applied degree programs combine theoretical learning with practical application for a range of career and employment opportunities.

**Entrance Requirement:** Admission requirements may be similar to those of diploma programs.

## BACHELOR'S DEGREE

*Program Length: 4 - 5 years of full-time study*

Bachelor's Degree programs provide a more theoretical or academic approach to learning.

**Entrance Requirement:** High School graduation (with specified grades and subjects).

## UNIVERSITY STUDIES

*Program Length: 4 or more years: one to two years of study at MHC followed by two or more years of study at the transfer university*

University Studies programs are one to two years of a degree-level program completed at MHC followed by two or more years of study at the transfer university.

**Entrance Requirement:** High school graduation (with specified grades and subjects).





## PROGRAMS

*Programs best suited to international students*

### CERTIFICATE

- Administrative Office Professional Certificate
- Early Learning and Child Care Certificate
- Health Care Aide Certificate
- Information Technology Certificate

### DIPLOMA

- Administrative Office Management Diploma
- Built Environment Engineering Technology Diploma (BEET)
- Business Administration Diploma
- Child and Youth Care Counsellor Diploma
- Criminal Justice Diploma
- Early Learning & Child Care Diploma
- Environmental Biology Reclamation Technology Diploma
- Humanities & Social Sciences Diploma
- Information Technology Diploma
- Kinesiology Diploma
- Occupational/Physical Therapist Assistant Diploma
- Practical Nurse Diploma
- Power Engineering Technology Diploma
- Service Dog & Canine Studies Management Diploma
- Social Work Diploma
- Sport & Event Marketing and Management Diploma
- Sustainable Innovation Diploma

### POST-DIPLOMA CERTIFICATE

- Intermediate Accounting
- Advanced Accounting
- Marketing & Design

### APPLIED DEGREE

- Bachelor of Applied Arts - Art & Design

### BACHELOR'S DEGREE OFFERED IN PARTNERSHIP WITH ALBERTA UNIVERSITIES

- Bachelor of Nursing - University of Calgary
- Bachelor of Education - Mount Royal University
- Bachelor of Social Work - University of Calgary

### UNIVERSITY STUDIES

#### (Coursework only, not credential)

- Arts
- Commerce/Management
- Science
- Social Work

*Want to explore your career options? Visit [www.mhc.ab.ca/programs-and-admissions](http://www.mhc.ab.ca/programs-and-admissions)*



# Student voice



**AIMEE YEE**, Philippines  
Business Administration Diploma

*“At MHC, you could go to International Education, you could go to the library or you could reach out to your instructors and they are willing to help. They would even ask you how you are doing. That made me feel like it is not just about school. They look at the whole wellness of their students”*



# Apply to MHC

Not sure where to begin? Explore programs at [www.mhc.ab.ca/programs-and-admissions](http://www.mhc.ab.ca/programs-and-admissions).

1

## EXPLORE & SELECT PROGRAM

MHC offers certificate, diploma, applied degree and university transfer programs in the areas of arts, education, business, health, science, trades and technology.

2

## SUBMIT APPLICATION

A non-refundable application fee of \$125 is due at the time of application. Please apply at: [www.applyalberta.ca](http://www.applyalberta.ca)

For additional information, please contact [inted@mhc.ab.ca](mailto:inted@mhc.ab.ca).

3

## SUBMIT SUPPORTING DOCUMENTATION

Official transcripts, English Language Proficiency (if applicable), and passport. Please submit documents to [registration@mhc.ab.ca](mailto:registration@mhc.ab.ca).

Applicants may be referred to International Education for an information session and interview.

4

## PAY DEPOSIT

Applicants will receive information on deposit and tuition installment. This fee is non-refundable and an application may be refused at any time if it is determined there is no reasonable chance to secure a study permit. Once accepted, make sure to pay the deposit to secure your seat within 21 days. **\*Deposit \$5000**

For certain countries, an additional tuition payment installment is required. For more information, please email [inted@mhc.ab.ca](mailto:inted@mhc.ab.ca).

5

## STUDY PERMIT

When all requirements are met and your deposit (and additional tuition payment installment if required) is received by MHC, you will receive your Study Permit Acceptance Letter (SPAL) and Provincial Attestation Letter (PAL) directly to your MHC email. These documents will be required for your study permit application.

For more information on applying for a study permit for entry to Canada as an international student, please visit [www.canada.ca/en/immigration-refugees-citizenship/services/study-canada/portal-application-process-study.html](http://www.canada.ca/en/immigration-refugees-citizenship/services/study-canada/portal-application-process-study.html)

6

## NEXT STEPS

You will receive onboarding information and an onboarding checklist from the International Education office. We recommend that you arrive one to two weeks before classes begin so that you may attend orientation sessions, familiarize yourself with your new accommodations, get to know your way around campus and the city, and open a bank account (if necessary).

### Send official transcripts by mail to:

Medicine Hat College  
Registrar's Office  
229 College Drive SE  
Medicine Hat, Alberta, Canada  
T1A 3Y6

Application deadlines reflect the last day that applications and supporting documents will be accepted. We encourage students to apply early since many programs have limited seats or are competitive. For more information, please visit [mhc.ab.ca](http://mhc.ab.ca).

## IMPORTANT DATES

### OCTOBER 2024

Fall Applications Open

### NOVEMBER 2024

Open House

### DECEMBER 2024

Proof of Study Permit Deadline

### JANUARY 2025

Winter New international Student Orientation

### MAY 2025

Application Deadline for Competitive Programs

### JUNE 2025

Winter Applications Open

### SEPTEMBER 2025

New International Student Orientation



## STUDY AT MHC

For more information about deadlines, tuition & fees, and how to apply, please scan the QR code.



**DID YOU KNOW?**

RESIDENCE ASSISTANTS LIVE ON-SITE AND PROVIDE SUPPORT AND SECURITY FOR STUDENTS IN OUR RESIDENCE COMMUNITIES.

**300**

STUDENTS LIVE IN RESIDENCE



**2 MIN  
WALK TO  
CLASS**

TAKE A WALK THROUGH RESIDENCE. SCAN THE CODES BELOW TO TAKE A VIRTUAL TOUR.



GOLFVIEW RESIDENCE

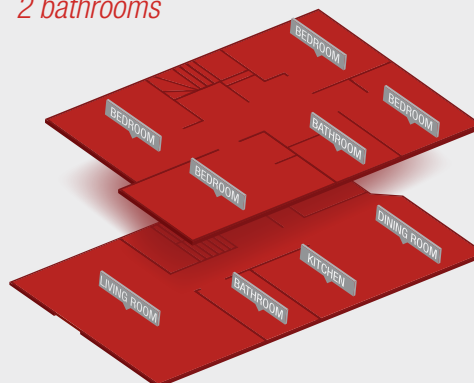


COULEEVIEW RESIDENCE

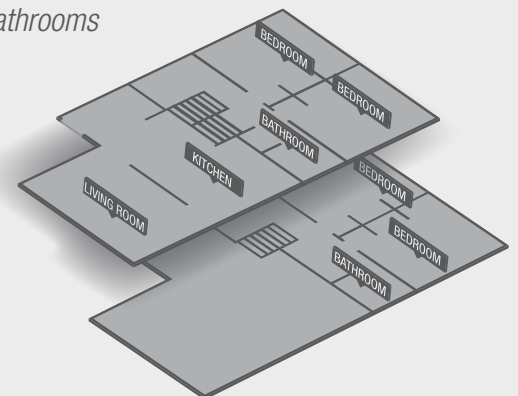
[WWW.MHC.AB.CA/VIRTUALTOUR](http://WWW.MHC.AB.CA/VIRTUALTOUR)



**GOLFVIEW**  
4 bedrooms  
2 bathrooms



**COULEEVIEW**  
4 bedrooms  
2 bathrooms





# Live Here

## YOUR HOME AWAY FROM HOME

### STUDENT RESIDENCE

Living in Residence will help you make the most of your MHC experience. With a two minute walk to classes and rent as low as **\$685/month** including utilities and WiFi, living on campus just makes sense!

Accommodations are comfortable, four-bedroom, fully-furnished townhouse units in two complexes ; Golfview and Couleeview. Each bedroom is equipped with a bed, desk, and closet. Each Unit is furnished with a WiFi router, washer and dryer, living room furniture, kitchen appliances, deep freezer, vacuum cleaner, and storage space.

### FIND OUT MORE AT

[www.mhc.ab.ca/student-life/residence](http://www.mhc.ab.ca/student-life/residence)

### OFF-CAMPUS HOUSING

The Student Residence Office compiles a list of off-campus housing. Medicine Hat College accepts listings of accommodations from landlords for our students' convenience but does not check the accommodations listed in any way and takes no responsibility for the actions of any landlord who advertises on this list, or for the condition of the rental accommodations listed.

Selection of off-campus accommodations and rental agreements are the sole responsibility of the student renter.

### FIND OUT MORE AT

[www.mhc.ab.ca/student-life/residence/off-campus-housing](http://www.mhc.ab.ca/student-life/residence/off-campus-housing)

**MEDICINE HAT IS  
CANADA'S SUNNIEST  
CITY WITH 2,512  
HOURS OF SUNSHINE  
PER YEAR**

## the city of **Medicine Hat**

The city of Medicine Hat is a thriving city of approximately 68,000 residents. Located three hours away from Calgary in beautiful southeast Alberta, residents enjoy the beauty and peace of the coulees and rolling prairies as well as the sunniest climate of any city in Canada. As a regional center, Medicine Hat has the amenities of a much larger city, including shopping malls, a cinema, recreational and cultural facilities.

Medicine Hat boasts a diverse economy built around industries including oil and gas development, agriculture, renewable energy and manufacturing. Medicine Hat also serves a wider population in southeastern Alberta as a retail and services hub.

TOURISM

*Medicine Hat*

For more information about Medicine Hat, please visit  
[www.tourismmedicinehat.com](http://www.tourismmedicinehat.com)

## **BROOKS**

Some of MHC's programming is offered at our Brooks Campus, located 100 kilometers west of Medicine Hat. Brooks is a vibrant, diverse community rich in culture and western hospitality with a easy access to world-renowned attractions.

 **Tourism.**

For more information about Medicine Hat,  
please visit [brooksregiontourism.com](http://brooksregiontourism.com)

**Brooks , AB**

*1hr 5 minutes away*



**Elkwater , Cypress Hills**  
43 minutes away





[MHC.AB.CA](http://MHC.AB.CA)

**MEDICINE HAT CAMPUS**

299 COLLEGE DR SE  
MEDICINE HAT, AB / T1A 3Y6

**BROOKS CAMPUS**

200 HORTICULTURAL STATION RD E  
BROOKS, AB/T1R 1E5

